

PLAN NOT TO SCALE PHASE 1 CLOSURE OVERVIEW

NO TRAFFIC CONTROL
DEVICES TO BE PLACED
BLOCKING DRIVEWAYS

MIETAW DR

S OSPREY AVE

HIBISCUS ST

WISTERIA ST

CLEMATIS ST

DATURA ST

HYDE PARK ST

ROAD CLOSURE

ROAD CLOSED

ONE LANE CLOSED

ROAD CLOSED

ONE LANE CLOSED

ROAD CLOSED

ONE LANE CLOSED

ROAD CLOSED

ONE LANE CLOSED

ROAD CLOSED

ONE LANE CLOSED

ROAD CLOSED

ONE LANE CLOSED

ROAD CLOSED

ONE LANE CLOSED

ROAD CLOSED

ONE LANE CLOSED

ROAD CLOSED

ONE LANE CLOSED

ROAD CLOSED

ONE LANE CLOSED

ROAD CLOSED

ONE LANE CLOSED

ROAD CLOSED

ONE LANE CLOSED

ROAD CLOSED

ONE LANE CLOSED

| TABLE 1 CHANNELIZING DEVICE SPACING | | | |
|--|------------------------------------|---|---------------------|
| Work Zone Speed (mph) | Max. Spacing (feet) | | Taper Length (feet) |
| | Cones or Temporary Tubular Markers | Type II Barricades, Vertical Panels, or Drums | |
| ≤ 45 | 25 | 50 | 50 |
| ≥ 50 | 25 | 50 | 100 |

| TABLE 2 TAPER LENGTH "L" | |
|-----------------------------|--------------------|
| Work Zone Speed (mph) | Min. Length (feet) |
| ≤ 40 | L = WS |
| ≥ 45 | L = WS |

| TABLE 3 WORK ZONE SIGN SPACING "X" | |
|--|---------------------|
| Road Type | Min. Spacing (feet) |
| Arterials and Collectors with Work Zone Speed ≥ 40 mph | 200 |
| Arterials and Collectors with Work Zone Speed ≥ 45 mph | 500 |
| Limited Access Roadways | 1,500 |

| TABLE 4 BUFFER LENGTH "B" | |
|------------------------------|--------------------|
| Work Zone Speed (mph) | Min. Length (feet) |
| 25 | 155 |
| 30 | 200 |
| 35 | 250 |
| 40 | 305 |
| 45 | 360 |
| 50 | 425 |
| 55 | 495 |
| 60 | 570 |
| 65 | 645 |
| 70 | 730 |

For Limited access roadways with work zone speed ≥ 35 mph, the minimum spacing may be reduced in accordance with the MUTCD and as approved by the Engineer.

Note: When Buffer Length "B" cannot be obtained due to geometric constraints, use the greatest length possible, but not less than 155 feet.

SPEED LIMIT 30

400 ft

Brandon Sharp

FDOT

Certificate: 618114

Issued: 12/14/2023
Expires: 12/08/2027
Instructor: M.H.

Brandon Sharp
Has Completed a FDOT Approved Temporary Traffic Control: Advanced Course.
Training Provider: myTTConline
83 Geneva Dr Ste. 621394
Oviedo, FL 32762
Ph: 407-901-4206
Verify this Certificate at www.motadmn.com.

DRAWN BY BS

MOT Plans

PROJECT NUMBER: PIT 2

SITE LOCATION: S OSPREY AVE

PLAN NOT TO SCALE PHASE 1 DETOUR OVERVIEW

NO TRAFFIC CONTROL
DEVICES TO BE PLACED
BLOCKING DRIVEWAYS

| TABLE 1 CHANNELIZING DEVICE SPACING | | | | | |
|--|------------------------------------|--|---------------------------|---------|-----------------------|
| Work Zone Speed (mph) | Max. Spacing (feet) | | | | Work Zone Speed (mph) |
| | Cones or Temporary Tubular Markers | Type I Barricades, Vertical Panels, or Drums | Type II Barricades, Taper | Tangent | |
| ≤ 45 | 25 | 50 | 25 | 50 | ≤ 40 |
| ≥ 50 | 25 | 50 | 50 | 100 | ≥ 45 |

| TABLE 2 TAPER LENGTH "L" | | |
|-----------------------------|--------------------|--------------------|
| Work Zone Speed (mph) | Min. Length (feet) | Max. Length (feet) |
| ≤ 40 | W ² | L = 60 |
| ≥ 45 | L = 85 | |

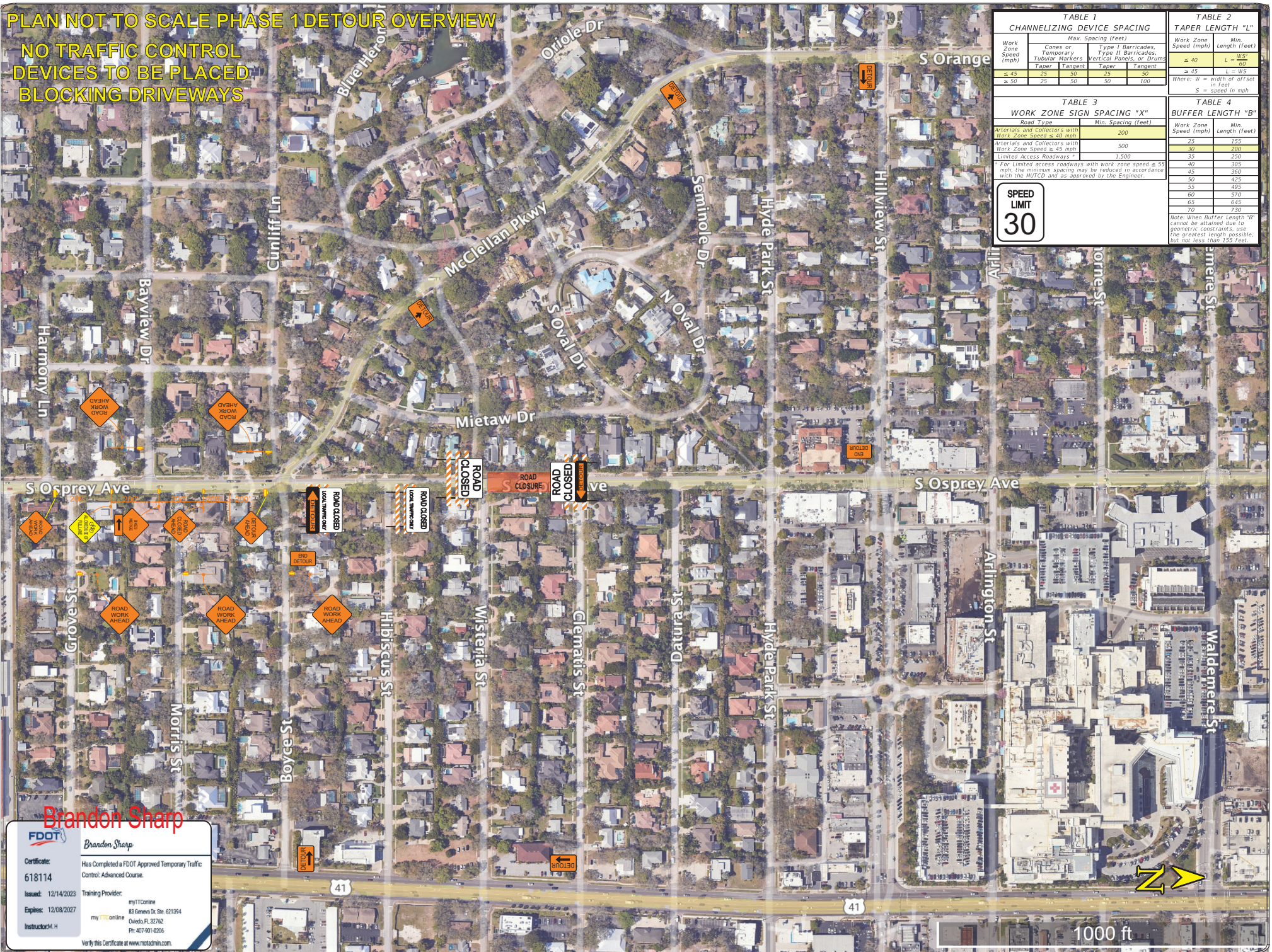
Where: W = width of offset in feet
S = speed in mph

| TABLE 3 WORK ZONE SIGN SPACING "X" | | |
|--|---------------------|---------------------|
| Road Type | Min. Spacing (feet) | Max. Spacing (feet) |
| Arterials and Collectors with Work Zone Speed ≤ 40 mph | 200 | |
| Arterials and Collectors with Work Zone Speed ≥ 45 mph | 500 | |
| Limited Access Roadways * | 1,500 | |

* For limited access roadways with work zone speed ≥ 55 mph, the minimum spacing may be reduced in accordance with the MUTCD and as approved by the Engineer.

| TABLE 4 BUFFER LENGTH "B" | | |
|------------------------------|--------------------|--------------------|
| Work Zone Speed (mph) | Min. Length (feet) | Max. Length (feet) |
| ≤ 35 | 155 | |
| 35 | 200 | |
| 40 | 250 | |
| 45 | 305 | |
| 50 | 360 | |
| 55 | 425 | |
| 60 | 495 | |
| 65 | 570 | |
| 70 | 645 | |

Note: When Buffer Length "B" cannot be attained due to geometric constraints, use the greatest length possible, but not less than 155 feet.



Brandon Sharp

FDOT

Certificate: 618114

Has Completed a FDOT Approved Temporary Traffic Control: Advanced Course.

Issued: 12/14/2023

Expires: 12/08/2027

Training Provider: myTTConline

myTTConline

83 Geneva Dr Ste. 621394

Oviedo, FL 32762

Ph: 407-901-4206

Verify this Certificate at www.motadmn.com.

PLAN NOT TO SCALE PHASE 2 SHEET 1

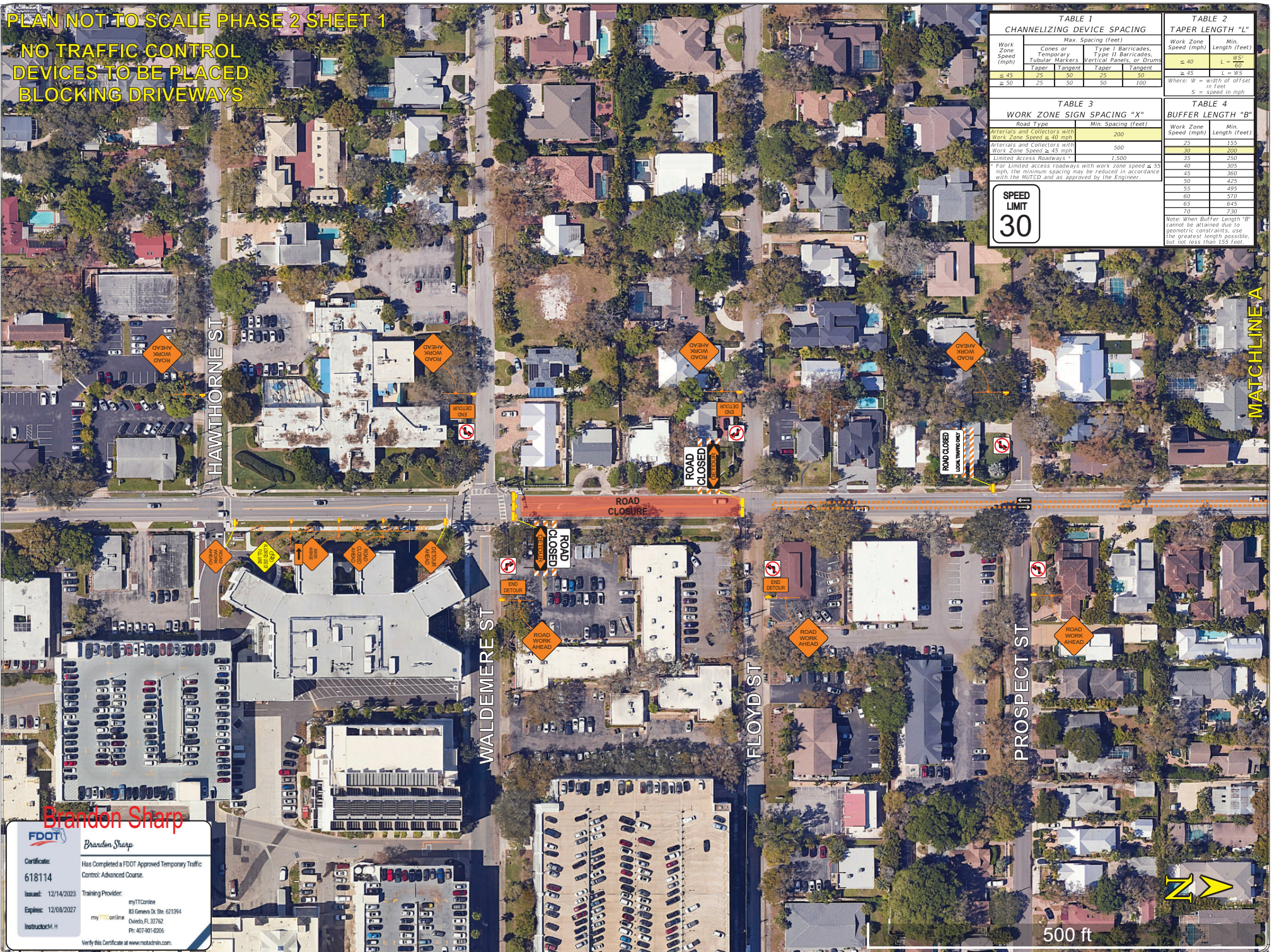
NO TRAFFIC CONTROL
DEVICES TO BE PLACED
BLOCKING DRIVEWAYS

| TABLE 1 CHANNELIZING DEVICE SPACING | | | | | TABLE 2 TAPER LENGTH "L" | |
|--|--|--|-------|---------|---|---------------------------|
| Work Zone Speed (mph) | Max. Spacing (feet) | | | | Work Zone Speed (mph) | Min. Length (feet) |
| | Cones or Temporary Tubular Markers, or Drums | Type I Barricades, Type II Barricades, Vertical Panels, or Drums | Taper | Tangent | ≤ 40 | L = WS ² 60 |
| ≤ 45 | 25 | 50 | 25 | 50 | ≤ 45 | L = WS ² 60 |
| ≥ 50 | 25 | 50 | 50 | 100 | Where: W = width of offset in feet S = speed in mph | |

| TABLE 3 WORK ZONE SIGN SPACING "X" | | TABLE 4 BUFFER LENGTH "B" | |
|---|---------------------|------------------------------|-----------------------|
| Road Type | Min. Spacing (feet) | Work Zone Speed (mph) | Min. Length (feet) |
| Arterials and Collectors with Work Zone Speed ≤ 40 mph | 200 | 25 | 155 |
| Arterials and Collectors with Work Zone Speed ≥ 45 mph | 500 | 30 | 200 |
| Limited Access Roadways * | 1,500 | 35 | 250 |
| * For Limited access roadways with work zone speed ≥ 55 mph, the minimum spacing may be reduced in accordance with the MUTCD and as approved by the Engineer. | | | |
| | | 40 | 305 |
| | | 45 | 360 |
| | | 50 | 425 |
| | | 55 | 495 |
| | | 60 | 570 |
| | | 65 | 645 |
| | | 70 | 730 |

Note: When Buffer Length "B" cannot be attained due to geometric constraints, use the greatest length possible, but not less than 155 feet.

SPEED
LIMIT
30



MATCHLINE A



500 ft

Brandon Sharp

FDOT

Certificate: 618114

Issued: 12/14/2023

Expires: 12/08/2027

Instructor: M.H

Has Completed a FDOT Approved Temporary Traffic Control: Advanced Course.

Training Provider: myTTConline

83 Geneva Dr Ste. 621394
Oviedo, FL 32762
Ph: 407-901-4206

Verify this Certificate at www.motadmn.com.

PLAN NOT TO SCALE PHASE 2 SHEET 2

NO TRAFFIC CONTROL
DEVICES TO BE PLACED
BLOCKING DRIVEWAYS

Two 10' Lanes to be
maintained at all times
for local traffic only

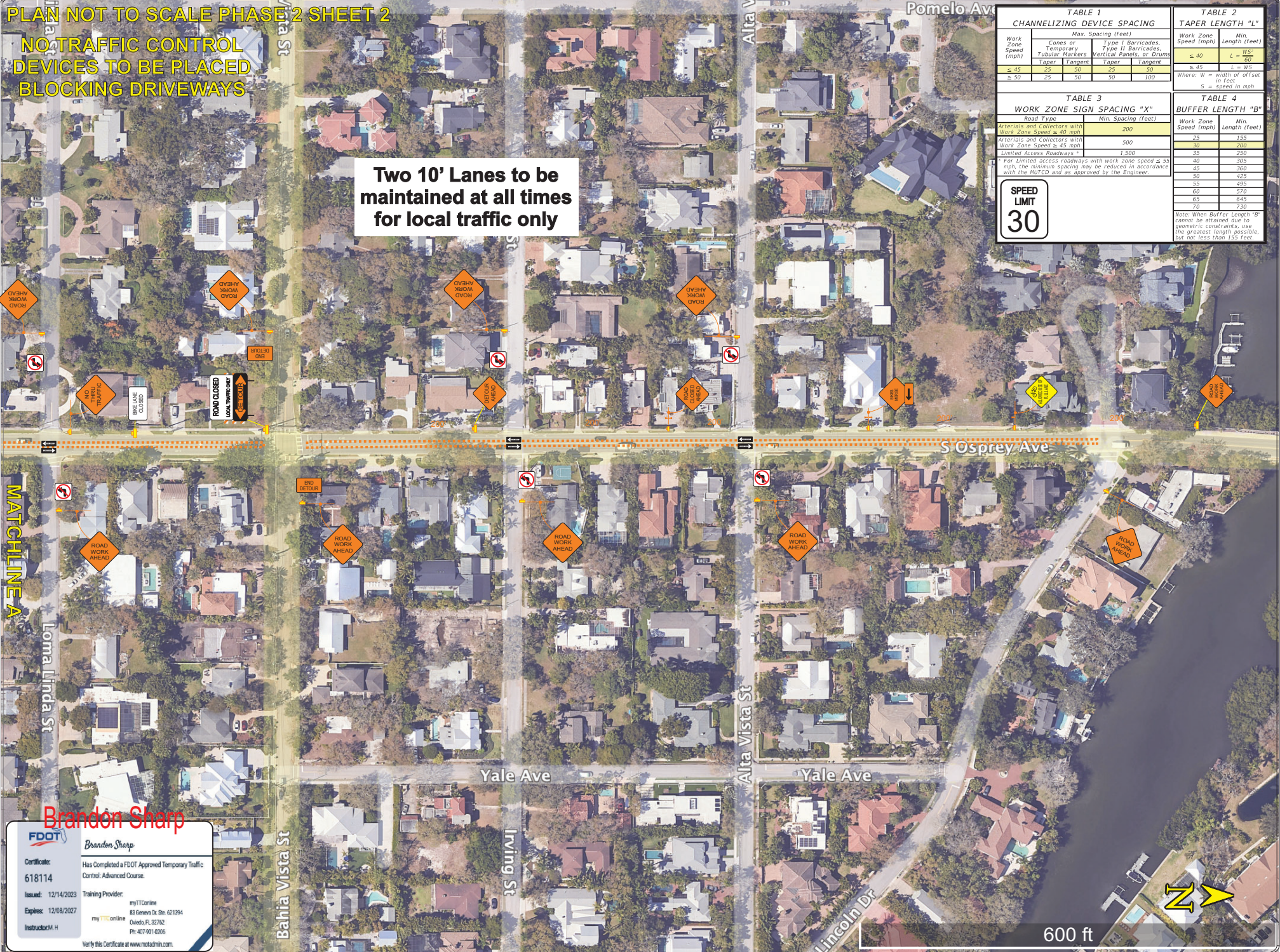
| TABLE 1 CHANNELIZING DEVICE SPACING | | | | TABLE 2 TAPER LENGTH "L" | |
|--|--|---------|---|-----------------------------|----------------------------|
| Work Zone Speed (mph) | Max. Spacing (feet) | | | Work Zone Speed (mph) | Min. Length (feet) |
| | Cones or Temporary Tubular Markers, or Drums | | Type II Barricades, Type II Barricades, Vertical Panels, or Drums | ≤ 40 | L = WS ² 60' |
| | Taper | Tangent | Taper | ≥ 45 | L = WS ² 60' |
| ≤ 45 | 25 | 50 | 25 | 50 | |
| ≥ 50 | 25 | 50 | 50 | 100 | |

Where: W = width of offset
in feet
S = speed in mph

| TABLE 3 WORK ZONE SIGN SPACING "X" | | TABLE 4 BUFFER LENGTH "B" | |
|---|---------------------|------------------------------|-----------------------|
| Road Type | Min. Spacing (feet) | Work Zone Speed (mph) | Min. Length (feet) |
| Arterials and Collectors with Work Zone Speed ≤ 40 mph | 200 | 25 | 155 |
| Arterials and Collectors with Work Zone Speed ≥ 45 mph | 500 | 30 | 200 |
| Limited Access Roadways * | 1,500 | 35 | 250 |
| | | 40 | 305 |
| | | 45 | 360 |
| | | 50 | 425 |
| | | 55 | 495 |
| | | 60 | 570 |
| | | 65 | 645 |
| | | 70 | 730 |

* For Limited access roadways with work zone speed ≥ 55
mph, the minimum spacing may be reduced in accordance
with the MUTCD and as approved by the Engineer.

SPEED
LIMIT
30



Brandon Sharp



Brandon Sharp

Certificate: 618114
Has Completed a FDOT Approved Temporary Traffic Control: Advanced Course.
Issued: 12/14/2023
Expires: 12/08/2027
Training Provider: myTTConline
myTTConline
Oviedo, FL 32762
Ph: 407-901-4206
Instructor: M.H.
Verify this Certificate at www.motadmn.com.

DRAWN BY BS

MOT Plans

PROJECT NUMBER: PIT 3

SITE LOCATION: S OSPREY AVE

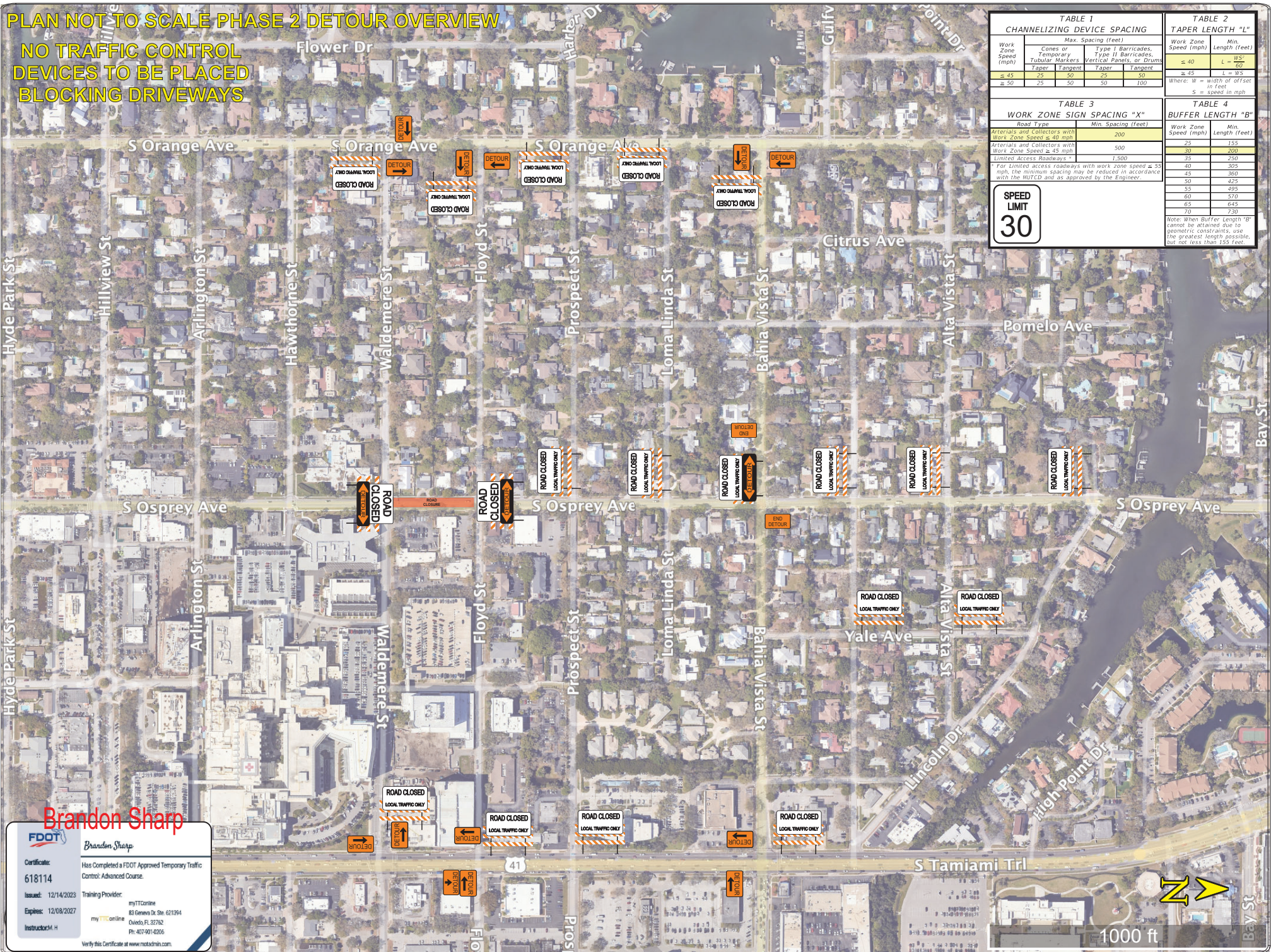
PLAN NOT TO SCALE PHASE 2 DETOUR OVERVIEW

NO TRAFFIC CONTROL
DEVICES TO BE PLACED
BLOCKING DRIVEWAYS

| TABLE 1 CHANNELIZING DEVICE SPACING | | | | | TABLE 2 TAPER LENGTH "L" | |
|--|--|--|-------|---------|--|---------------------------|
| Work Zone Speed (mph) | Max. Spacing (feet) | | | | Work Zone Speed (mph) | Min. Length (feet) |
| | Cones or Temporary Tubular Markers | Type I Barricades, Type II Barricades, Vertical Panels, or Drums | Taper | Tangent | ≤ 40 | L = WS ² 60 |
| ≤ 45 | 25 | 50 | 25 | 50 | ≤ 45 | WS |
| ≥ 50 | 25 | 50 | 50 | 100 | Where: W = width of off set in feet S = speed in mph | |

| TABLE 3 WORK ZONE SIGN SPACING "X" | | TABLE 4 BUFFER LENGTH "B" | |
|---|---------------------|------------------------------|-----------------------|
| Road Type | Min. Spacing (feet) | Work Zone Speed (mph) | Min. Length (feet) |
| Arterials and Collectors with Work Zone Speed ≤ 40 mph | 200 | 25 | 155 |
| Arterials and Collectors with Work Zone Speed ≥ 45 mph | 500 | 30 | 200 |
| Limited Access Roadways * | 1,500 | 35 | 250 |
| * For Limited access roadways with work zone speed ≥ 55 mph, the minimum spacing may be reduced in accordance with the MUTCD and as approved by the Engineer. | | | |
| | | 40 | 305 |
| | | 45 | 360 |
| | | 50 | 425 |
| | | 55 | 495 |
| | | 60 | 570 |
| | | 65 | 645 |
| | | 70 | 730 |
| Note: When Buffer Length "B" cannot be attained due to geometric constraints, use the greatest length possible, but not less than 155 feet. | | | |

SPEED
LIMIT
30



Brandon Sharp



Brandon Sharp

Certificate: 618114
Has Completed a FDOT Approved Temporary Traffic Control: Advanced Course.
Issued: 12/14/2023
Expires: 12/08/2027
Training Provider: myTTConline
myTTConline
83 Geneva Dr Ste. 621394
Oviedo, FL 32762
Ph: 407-901-4206
Instructor: M.H.
Verify this Certificate at www.motadmin.com.

DRAWN BY BS

MOT Plans

PROJECT NUMBER: PIT 3

SITE LOCATION: S OSPREY AVE

| SHEET | TABLE OF CONTENTS |
|-------|---|
| 1 | General Notes, TTC Tables |
| 2 | Definitions Temporary Traffic Control Devices Overhead Work Railroads Sight Distance Above Ground Hazard |
| 3 | Clear Zone Widths For Work Zones Superelevation Length Of Lane Closures Overweight/Oversize Vehicles Lane Widths High-Visibility Safety Apparel Speed Reduction Signing |
| 4 | Flagger Control Survey Work Zones Signs |
| 5 | Work Zone Sign Supports |
| 6 | Commonly Used Warning and Regulatory Signs In Work Zones |
| 7 | Manholes/Crosswalks/Joints Truck Mounted Attenuators Signals Channelizing Devices Channelizing Devices Consistency Advanced Warning Arrow Boards |
| 8 | Drop-Offs In Work Zones |
| 9 | Business Entrance Temporary Asphalt Separator |
| 10 | Channelizing Devices Notes Temporary Barrier Notes |
| 11 | Pavement Markings |

GENERAL NOTES:

1. This Index contains information specific to the Federal and State guidelines and standards for the preparation of traffic control plans and for the execution of traffic control in work zones, for construction and maintenance operations and utility work on highways, roads and streets on the State Highway System. Certain requirements in this Index are based on the high volume nature of State Highways. For highways, roads and streets off the State Highway System, the local agency (City/County) having jurisdiction may adopt requirements based on the minimum requirements provided in the MUTCD.
2. Use this Index in accordance with the Plans and Indexes 102-601 through 102-680. Indexes 102-601 through 102-680 are Department-specific typical applications of commonly encountered situations. Adjust device location or number thereof as recommended by the Worksite Traffic Supervisor and approved by the Engineer. Devices include, but are not limited to, flaggers, portable temporary signals, signs, pavement markings, and channelizing devices. Comply with MUTCD or applicable Department criteria for any changes and document the reason for the change.
3. Except for emergencies, any road closure on State Highway System must comply with Section 335.15, F.S.

| TABLE 1 CHANNELIZING DEVICE SPACING | | | | |
|--|------------------------------------|---------|--|---------|
| Work Zone Speed (mph) | Max. Spacing (feet) | | | |
| | Cones or Temporary Tubular Markers | | Type I Barricades, Type II Barricades, Vertical Panels, or Drums | |
| | Taper | Tangent | Taper | Tangent |
| ≤ 45 | 25 | 50 | 25 | 50 |
| ≥ 50 | 25 | 50 | 50 | 100 |

| TABLE 3 WORK ZONE SIGN SPACING "X" | |
|--|---------------------|
| Road Type | Min. Spacing (feet) |
| Arterials and Collectors with Work Zone Speed ≤ 40 mph | 200 |
| Arterials and Collectors with Work Zone Speed ≥ 45 mph | 500 |
| Limited Access Roadways * | 1,500 |

* For Limited access roadways with work zone speed ≤ 55 mph, the minimum spacing may be reduced in accordance with the MUTCD and as approved by the Engineer.

SYMBOLS:

-  Work Area
 Channelizing Device
 Work Zone Sign
 Type III Barricade
 Lane Identification and Direction of Traffic

| TABLE 2 TAPER LENGTH "L" | |
|-----------------------------|-----------------------|
| Work Zone Speed (mph) | Min. Length (feet) |
| ≤ 40 | $L = \frac{WS^2}{60}$ |
| ≥ 45 | $L = WS$ |

Where: W = width of offset in feet
S = speed in mph

| TABLE 4 BUFFER LENGTH "B" | |
|------------------------------|--------------------|
| Work Zone Speed (mph) | Min. Length (feet) |
| 25 | 155 |
| 30 | 200 |
| 35 | 250 |
| 40 | 305 |
| 45 | 360 |
| 50 | 425 |
| 55 | 495 |
| 60 | 570 |
| 65 | 645 |
| 70 | 730 |

Note: When Buffer Length "B" cannot be attained due to geometric constraints, use the greatest length possible, but not less than 155 feet.

Brandon Sharp



Certificate:

618114

DESCRIPTION:
Issued: 12/14/2023

Expires: 12/08/2027

Instructor: M. H.

Brandon Sharp

Has Completed a FDOT Approved Temporary Traffic Control: Advanced Course.

Training Provider:

myTTCOnline
83 Geneva Dr. Ste. 621394
Oviedo, FL 32762
Ph: 407-901-0206

Verify this Certificate at www.motadmin.com.



**FY 2024-25
STANDARD PLANS**

**GENERAL INFORMATION FOR TRAFFIC
CONTROL THROUGH WORK ZONES**

INDEX
102-600

SHEET
1 of 11

**LAST
REVISION**
11/01/23

REVISION

Notes for Figure 6P-20—Typical Application 20

Detour for a Closed Street

Guidance:

1. *This plan should be used for streets without posted route numbers.*
2. *On multi-lane streets, Detour signs with an Advance Turn Arrow should be used in advance of a turn.*

Option:

3. Flashing warning lights and/or flags may be used to call attention to the advance warning signs.
4. Flashing warning lights may be used on Type 3 Barricades.
5. Detour signs may be located on the far side of intersections. A Detour sign with an advance arrow may be used in advance of a turn.
6. A Street Name sign may be mounted with the Detour sign. The Street Name sign may be either white on green or black on orange.

Standard:

7. **When used, the Street Name sign shall be placed above the Detour sign.**

Support:

8. Figure 6P-9 contains the information for detouring a numbered highway.



Typical Application 20



Notes: See Table 6P-2 for the meanings of the symbols used in this figure.
See Table 6B-1 for the meanings of the letter codes used in this figure.

