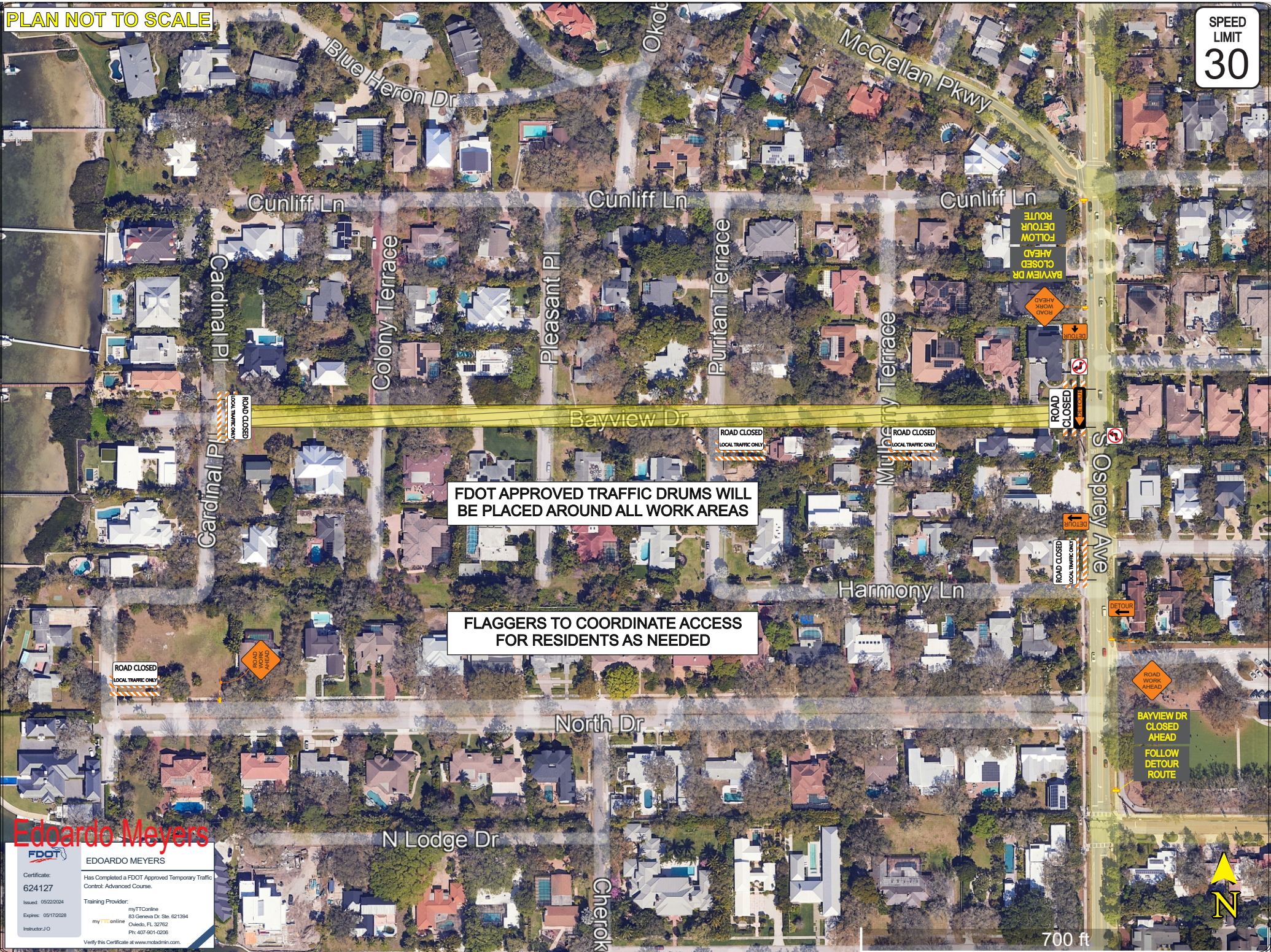


PLAN NOT TO SCALE

SPEED LIMIT 30



FDOT APPROVED TRAFFIC DRUMS WILL BE PLACED AROUND ALL WORK AREAS

FLAGGERS TO COORDINATE ACCESS FOR RESIDENTS AS NEEDED

**Edoardo Meyers**  
**FDOT**  
 EDOARDO MEYERS  
 Certificate: 624127  
 Issued: 05/22/2024  
 Expires: 05/17/2028  
 Instructor: J.O.  
 Has Completed a FDOT Approved Temporary Traffic Control: Advanced Course.  
 Training Provider: myTTOnline  
 83 Geneva Dr. Ste. 621394  
 Oviedo, FL 32762  
 Ph: 407-901-6208  
 Verify this Certificate at [www.mctadmin.com](http://www.mctadmin.com)

SHEET	TABLE OF CONTENTS
1	General Notes, TTC Tables
2	Definitions
	Temporary Traffic Control Devices
	Overhead Work
	Railroads
	Sight Distance
3	Above Ground Hazard
	Clear Zone Widths For Work Zones
	Superelevation
	Length Of Lane Closures
	Overweight/Oversize Vehicles
	Lane Widths
	High-Visibility Safety Apparel
Speed Reduction Signing	
4	Flagger Control
	Survey Work Zones
5	Signs
5	Work Zone Sign Supports
6	Commonly Used Warning and Regulatory Signs In Work Zones
7	Manholes/Crosswalks/Joints
	Truck Mounted Attenuators
	Signals
	Channelizing Devices
	Channelizing Devices Consistency
8	Advanced Warning Arrow Boards
8	Drop-Offs In Work Zones
	Business Entrance
9	Temporary Asphalt Separator
10	Channelizing Devices Notes
	Temporary Barrier Notes
11	Pavement Markings

**GENERAL NOTES:**

- This Index contains information specific to the Federal and State guidelines and standards for the preparation of traffic control plans and for the execution of traffic control in work zones, for construction and maintenance operations and utility work on highways, roads and streets on the State Highway System. Certain requirements in this Index are based on the high volume nature of State Highways. For highways, roads and streets off the State Highway System, the local agency (City/County) having jurisdiction may adopt requirements based on the minimum requirements provided in the MUTCD.
- Use this Index in accordance with the Plans and Indexes 102-601 through 102-680. Indexes 102-601 through 102-680 are Department-specific typical applications of commonly encountered situations. Adjust device location or number thereof as recommended by the Worksite Traffic Supervisor and approved by the Engineer. Devices include, but are not limited to, flaggers, portable temporary signals, signs, pavement markings, and channelizing devices. Comply with MUTCD or applicable Department criteria for any changes and document the reason for the change.
- Except for emergencies, any road closure on State Highway System must comply with Section 335.15, F.S.

**TABLE 1  
CHANNELIZING DEVICE SPACING**

Work Zone Speed (mph)	Max. Spacing (feet)			
	Cones or Temporary Tubular Markers		Type I Barricades, Type II Barricades, Vertical Panels, or Drums	
	Taper	Tangent	Taper	Tangent
≤ 45	25	50	25	50
≥ 50	25	50	50	100

**TABLE 2  
TAPER LENGTH "L"**

Work Zone Speed (mph)	Min. Length (feet)
≤ 40	$L = \frac{WS^2}{60}$
≥ 45	L = WS

Where: W = width of offset in feet  
S = speed in mph

**TABLE 3  
WORK ZONE SIGN SPACING "X"**

Road Type	Min. Spacing (feet)
Arterials and Collectors with Work Zone Speed ≤ 40 mph	200
Arterials and Collectors with Work Zone Speed ≥ 45 mph	500
Limited Access Roadways *	1,500





\* For Limited access roadways with work zone speed ≤ 55 mph, the minimum spacing may be reduced in accordance with the MUTCD and as approved by the Engineer.


**TABLE 4  
BUFFER LENGTH "B"**

Work Zone Speed (mph)	Min. Length (feet)
25	155
30	200
35	250
40	305
45	360
50	425
55	495
60	570
65	645
70	730

Note: When Buffer Length "B" cannot be attained due to geometric constraints, use the greatest length possible, but not less than 155 feet.

**SYMBOLS:**

-  Work Area
-  Channelizing Device
-  Work Zone Sign
-  Type III Barricade
-  Lane Identification and Direction of Traffic



**Edoardo Meyers**

**EDOARDO MEYERS**

Certificate: 624127  
 Issued: 05/22/2024  
 Expires: 05/17/2028  
 Instructor: J O

Has Completed a FDOT Approved Temporary Traffic Control: Advanced Course.  
 Training Provider: myTTConline  
 83 Geneva Dr. Ste. 621394  
 Okeechobee, FL 32762  
 Ph: 407-901-0206  
 Verify this Certificate at [www.mtbladmin.com](http://www.mtbladmin.com).



**FY 2025-26  
STANDARD PLANS**

**GENERAL INFORMATION FOR TRAFFIC  
CONTROL THROUGH WORK ZONES**

INDEX  
**102-600**

SHEET  
**1 of 11**

LAST REVISION 11/01/23

REVISION DESCRIPTION:

## Notes for Figure 6P-20 —Typical Application 20 Detour for a Closed Street

### Guidance:

1. *This plan should be used for streets without posted route numbers.*
2. *On multi-lane streets, Detour signs with an Advance Turn Arrow should be used in advance of a turn.*

### Option:

3. Flashing warning lights and/or flags may be used to call attention to the advance warning signs.
4. Flashing warning lights may be used on Type 3 Barricades.
5. Detour signs may be located on the far side of intersections. A Detour sign with an advance arrow may be used in advance of a turn.
6. A Street Name sign may be mounted with the Detour sign. The Street Name sign may be either white on green or black on orange.

### Standard:

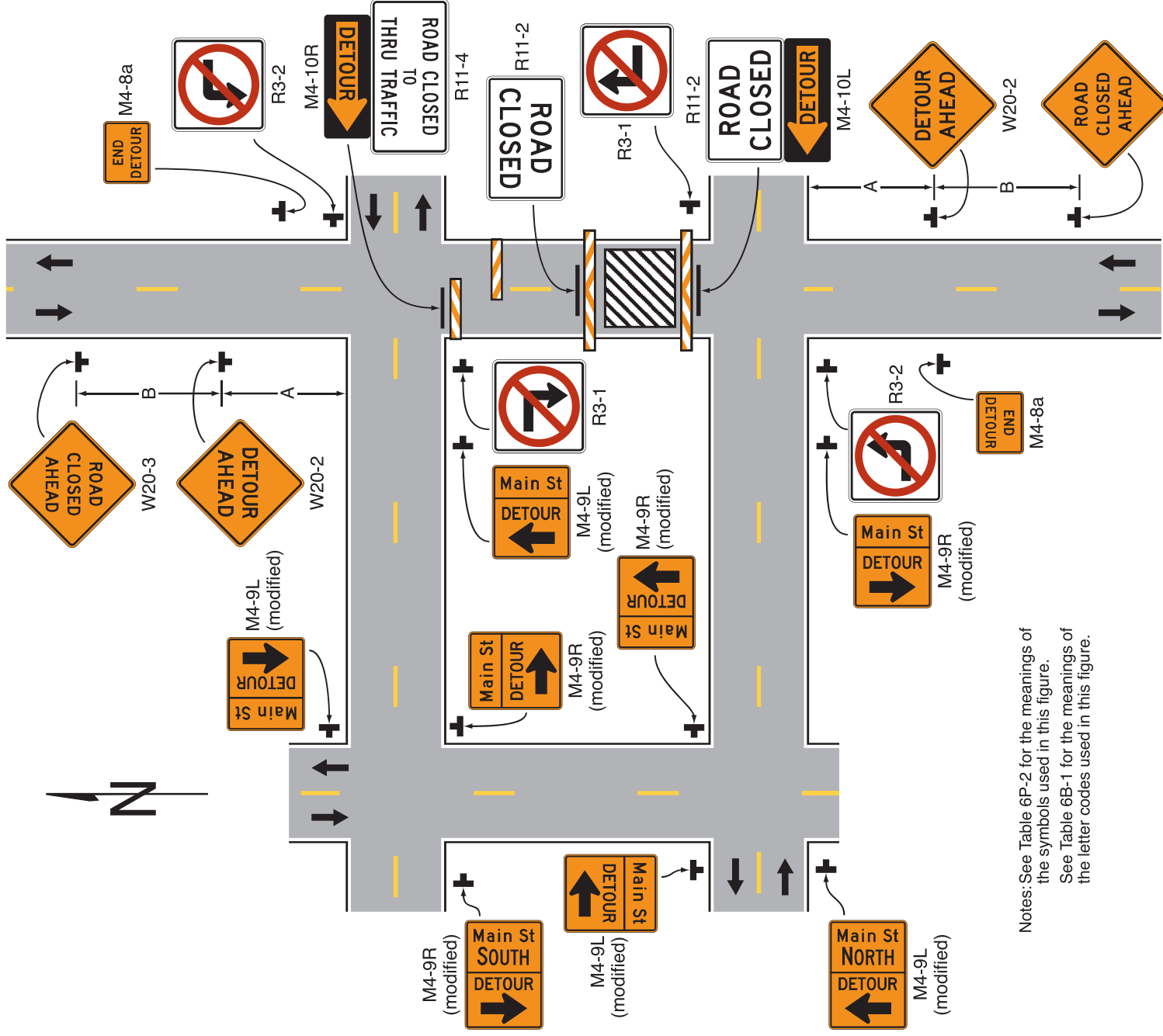
7. **When used, the Street Name sign shall be placed above the Detour sign.**

### Support:

8. Figure 6P-9 contains the information for detouring a numbered highway.



Figure 6P-20. Detour for a Closed Street (TA-20)



Notes: See Table 6P-2 for the meanings of the symbols used in this figure.  
 See Table 6B-1 for the meanings of the letter codes used in this figure.

### Typical Application 20

**Edoardo Meyers**

EDOARDO MEYERS

Has Completed a FDOT Approved Temporary Traffic Control Advanced Course.

Certificate: 624-127

Issued: 05/22/2024

Expires: 05/17/2028

Trainer: J D

Training Provider: myTTConline  
 25 Lakeshore Dr. #2134  
 Jacksonville, FL 32252  
 myTTConline Ph: 407-901-0206  
 Verify this Certificate at www.modultrn.com.